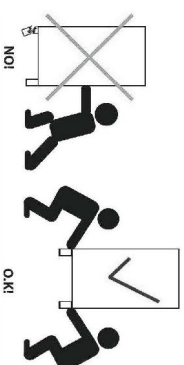
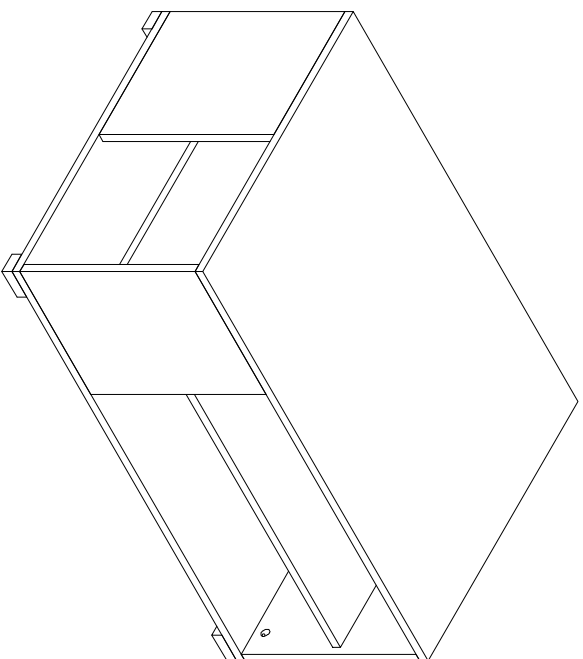


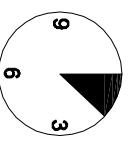
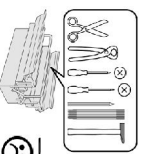
SIMPLE

SL90



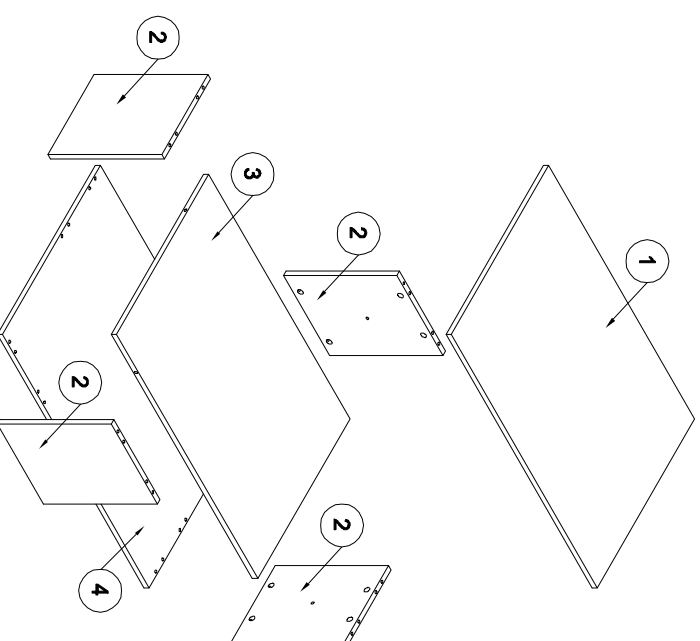
2.1.2018

- (D)** Montageanleitung
- (FR)** Notice de montage
- (NL)** Handleiding voor de montage
- (CZ)** Montážní návod
- (HU)** Szerelési útmutató
- (TR)** Montaj talimatı
- (GB)** Assembly Instructions
- (IT)** Istruzioni di montaggio
- (PL)** Instrukcja montażu
- (SK)** Návod na montáž
- (RO)** Instrucțiunile de montaj
- (RU)** Инструкции по монтажу

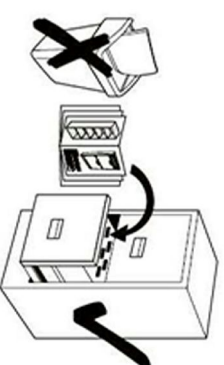
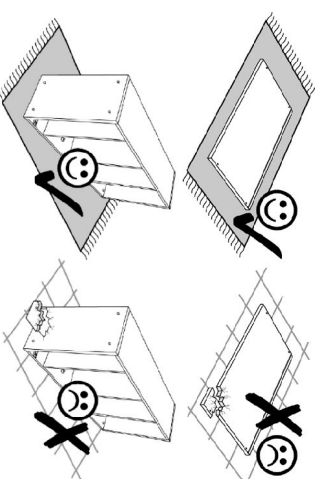


20 min.

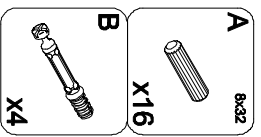
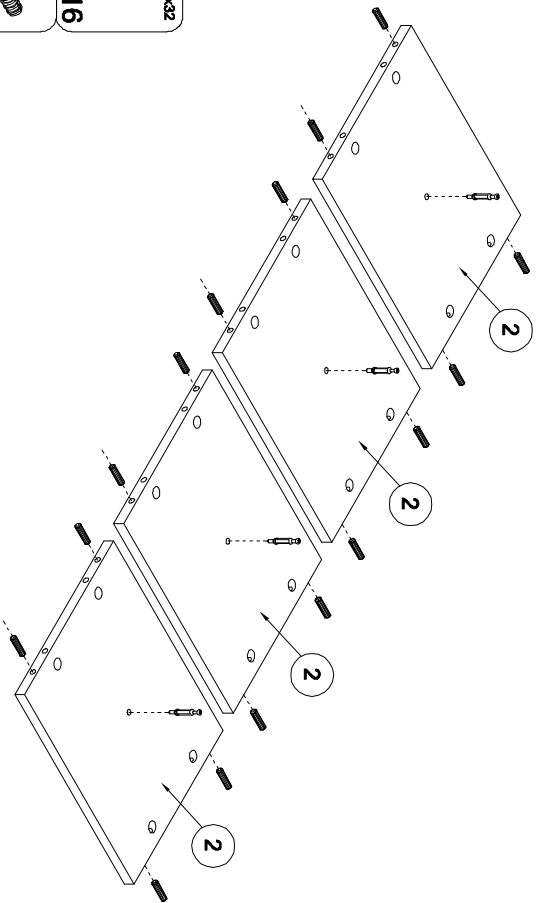
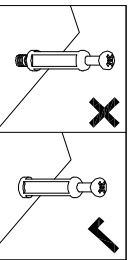
1



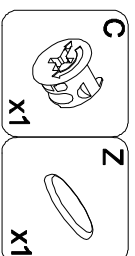
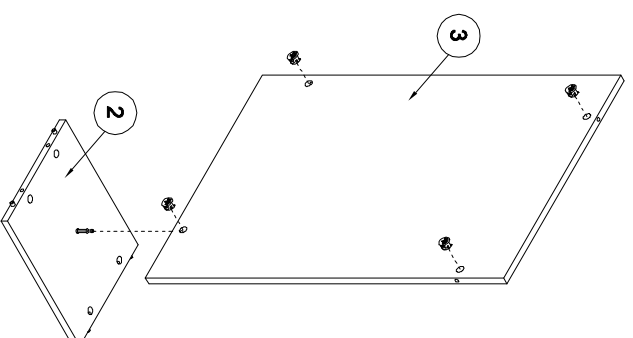
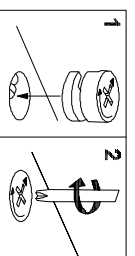
- B**  x20
- A**  6x32 x16
- C**  x20
- Z**  x20
- Y**  x4



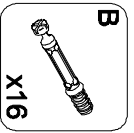
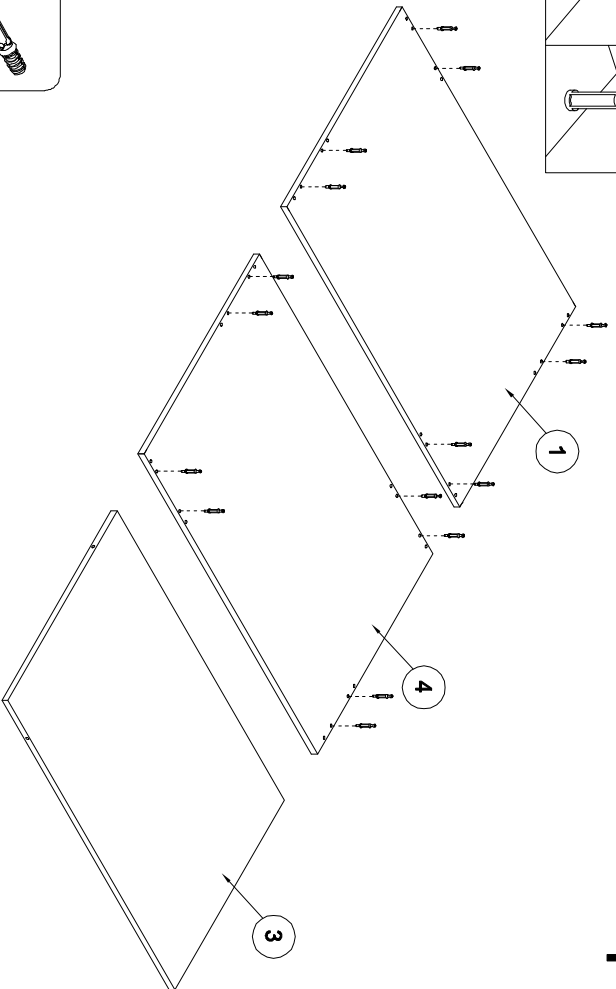
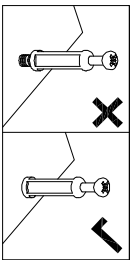
2



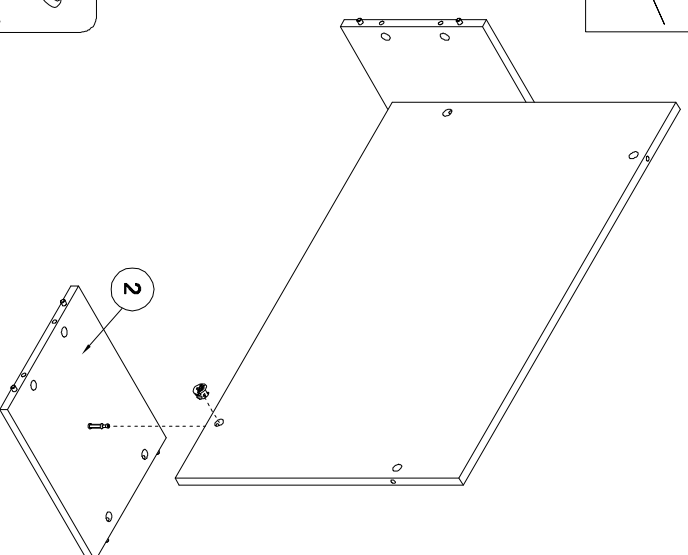
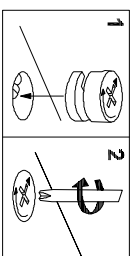
3



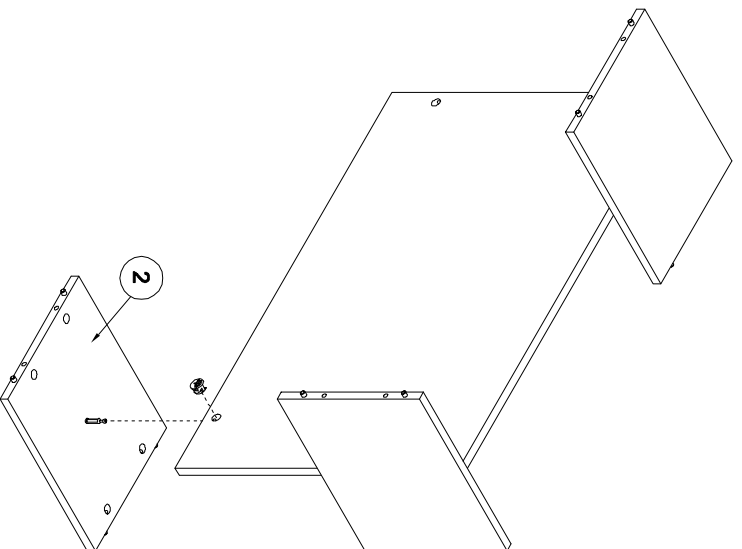
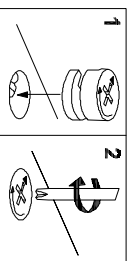
5



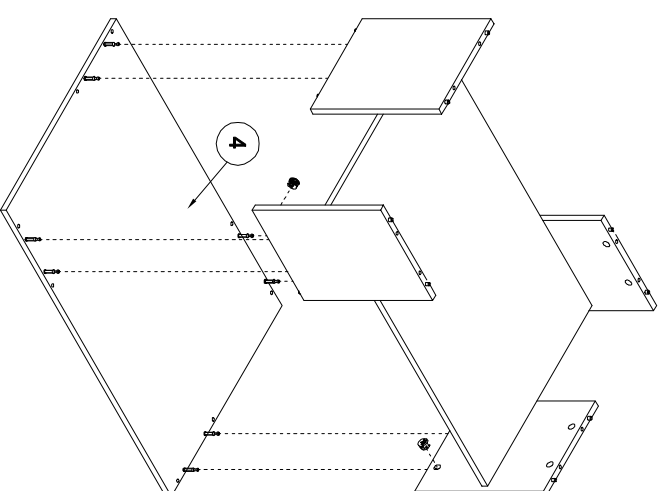
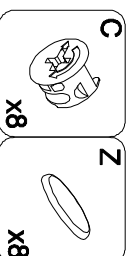
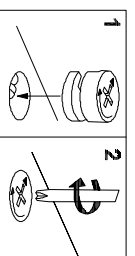
4



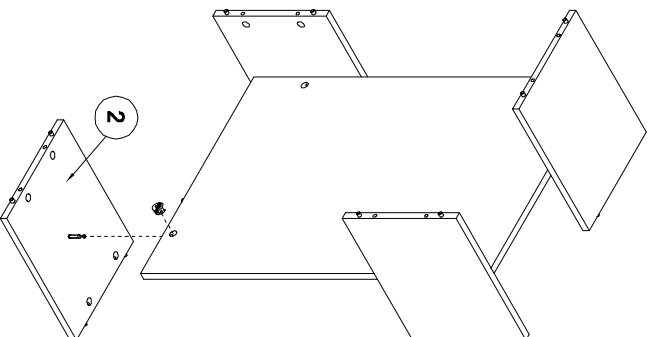
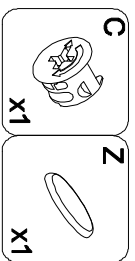
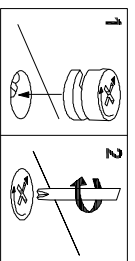
6



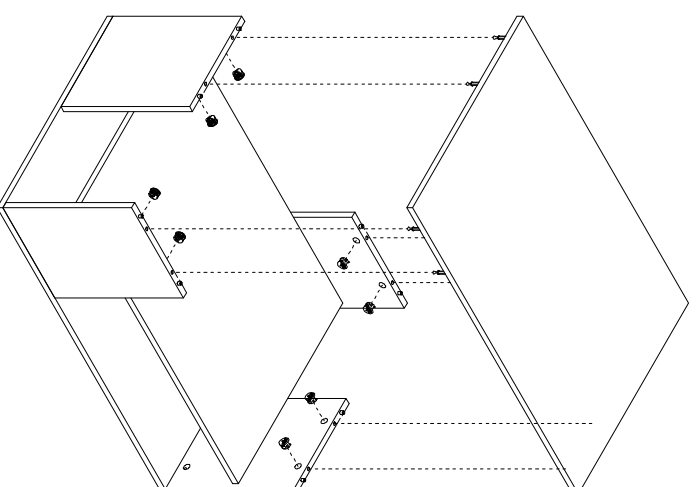
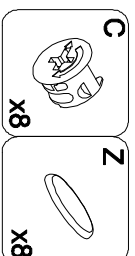
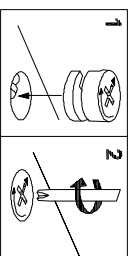
7



9



8



10

