

Model: *Roco*  
 Modell:

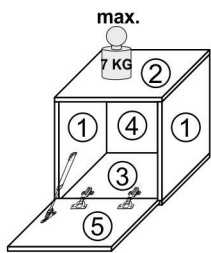
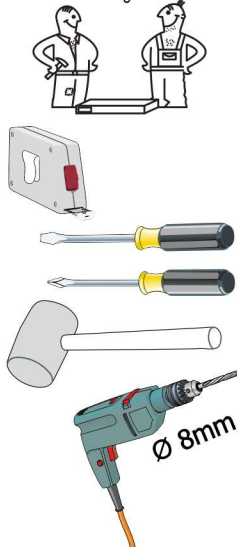
Typ: **05**  
 Type:

Strona: **1/3**  
 Blatt Nr:

PL  
 D  
 GB

# INSTRUKCJA MONTAŻOWA MONTAGEANLEITUNG ASSEMBLY INSTRUCTIONS

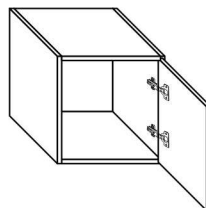
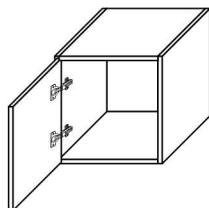
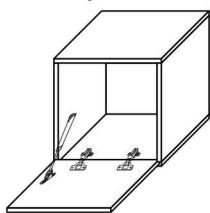
Do montażu potrzebne są:  
 Für die Montage dieser Type benötigen Sie:



**D** Sehr geehrter Kunde, sollte ein Teil fehlen oder beschädigt sein, kreuzen Sie bitte dieses deutlich auf der Montageanleitung an und schicken Sie zu uns ab.  
**GB** Dear customer, Should there be any place missing or damaged, kindly mark this place clearly on the attached assembly instructions and return it to us.  
**PL** Szanowny Kliencie, gdyby brakowało jakiegokolwiek części lub byłaby uszkodzona proszę to oznaczyć krzyżykiem na instrukcji montażowej i przelać instrukcję razem z reklamacją.

Option 2    Option 3

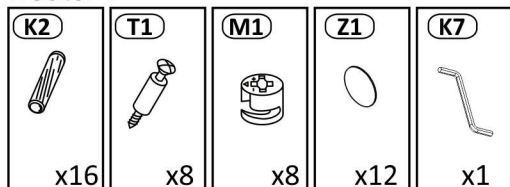
Option 1



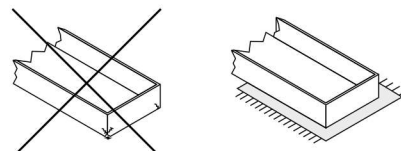
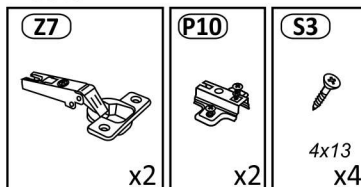
**Uwagi pielęgnacyjne!**  
 Proszę wycierać ściereczką do kurzu lub lekko wilgotną ściereczką. Nie stosować ŻADNYCH środków rysujących powierzchnie.

**Pflegehinweis!**  
 Bitte nur mit einem Staubtuch oder einem feuchtem Lappen reinigen. KEINE scheuernde Putzmittel verwenden!

Beutel 1



Beutel 2

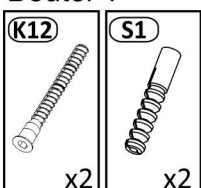


Proszę montować mebel na kartonie!  
 Bitte das Möbel auf der Verpackung montieren.

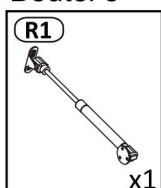
Beutel 3



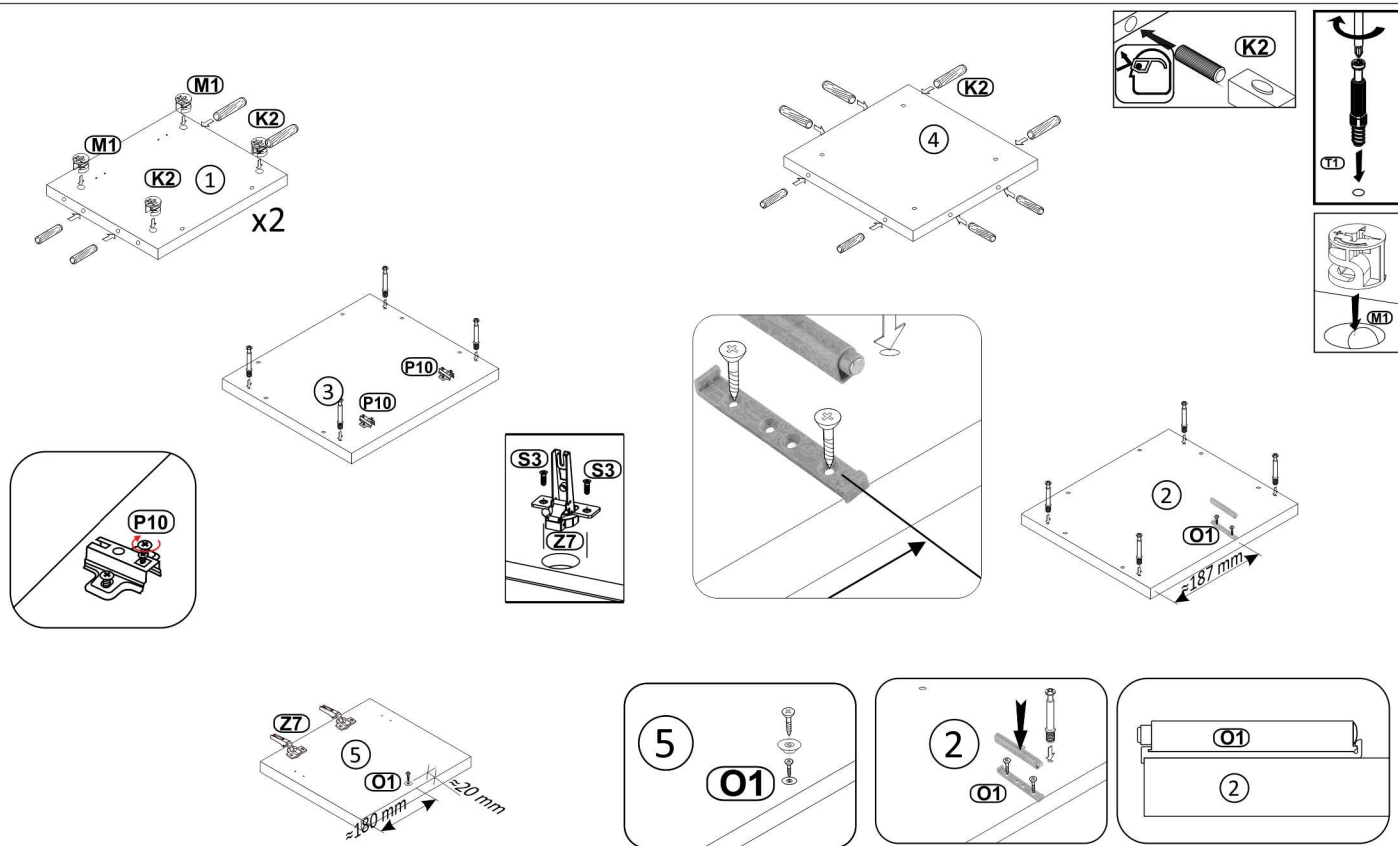
Beutel 4



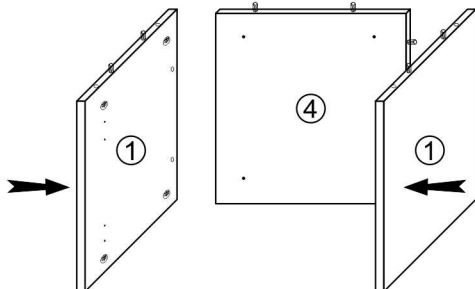
Beutel 5



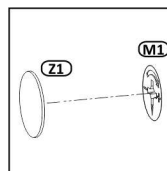
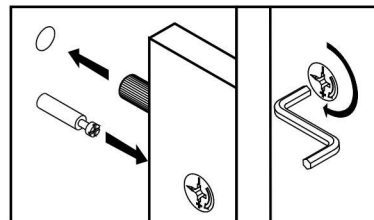
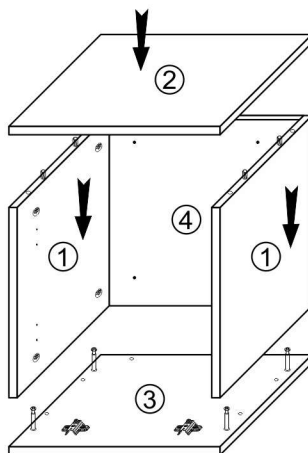
**1**



**1**

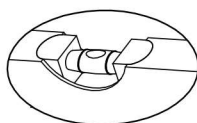


**2**

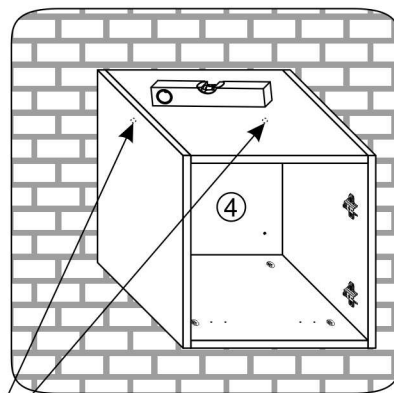
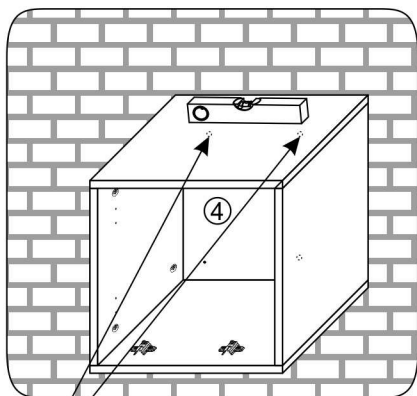


**3**

Option 1



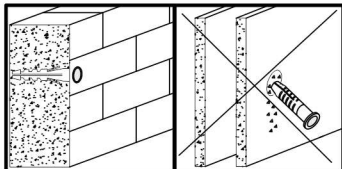
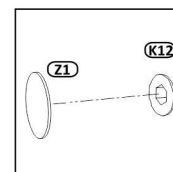
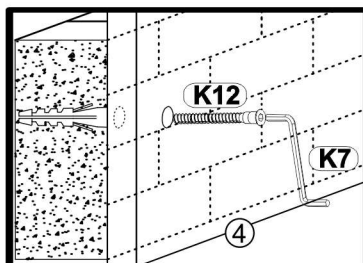
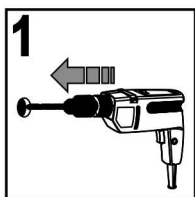
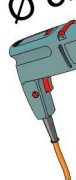
Option 2 & 3



Ø 8mm

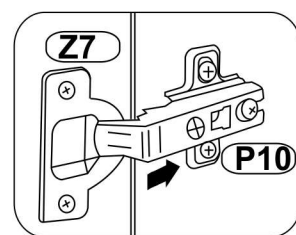
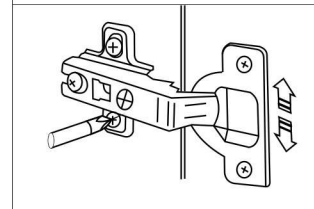
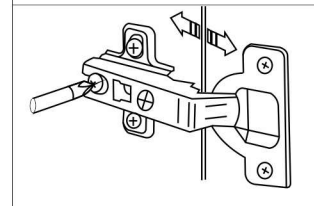
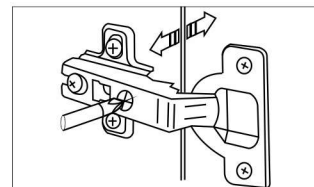
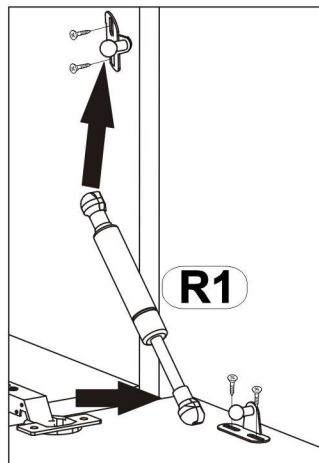
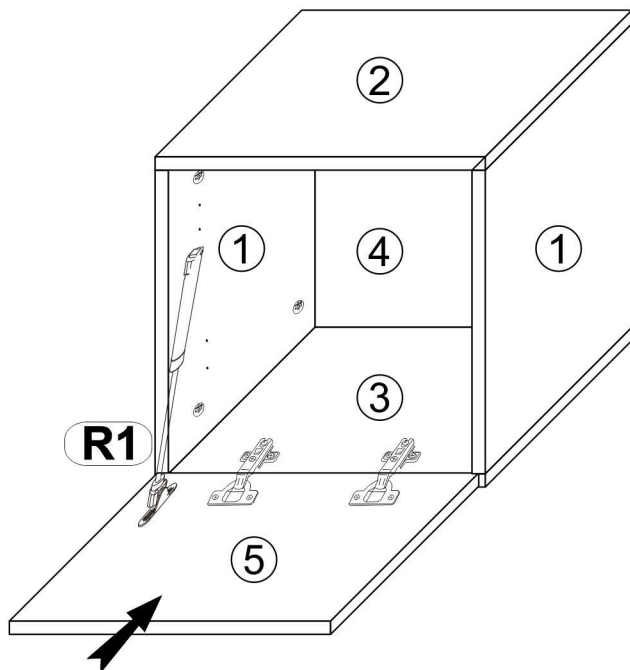


Ø 8mm



# 4

## Option 1



# 5

## Option 2

## Option 3

