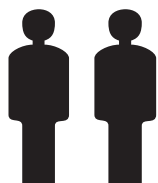
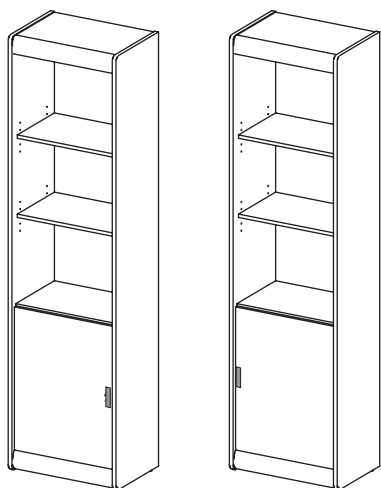
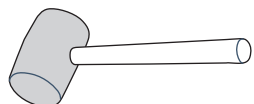
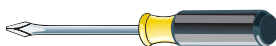
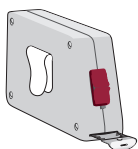


MONTAGEANLEITUNG INSTRUKCJA MONTAŻOWA

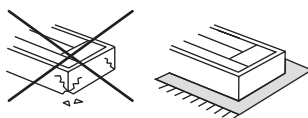


2 Personen
2 Osoby



TYPE "L" TYPE "R"

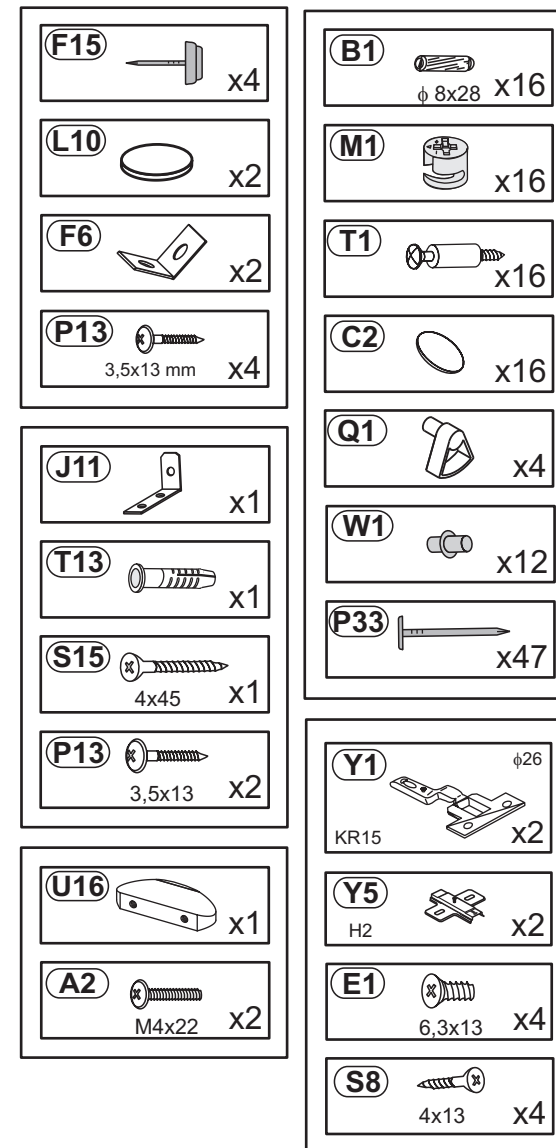
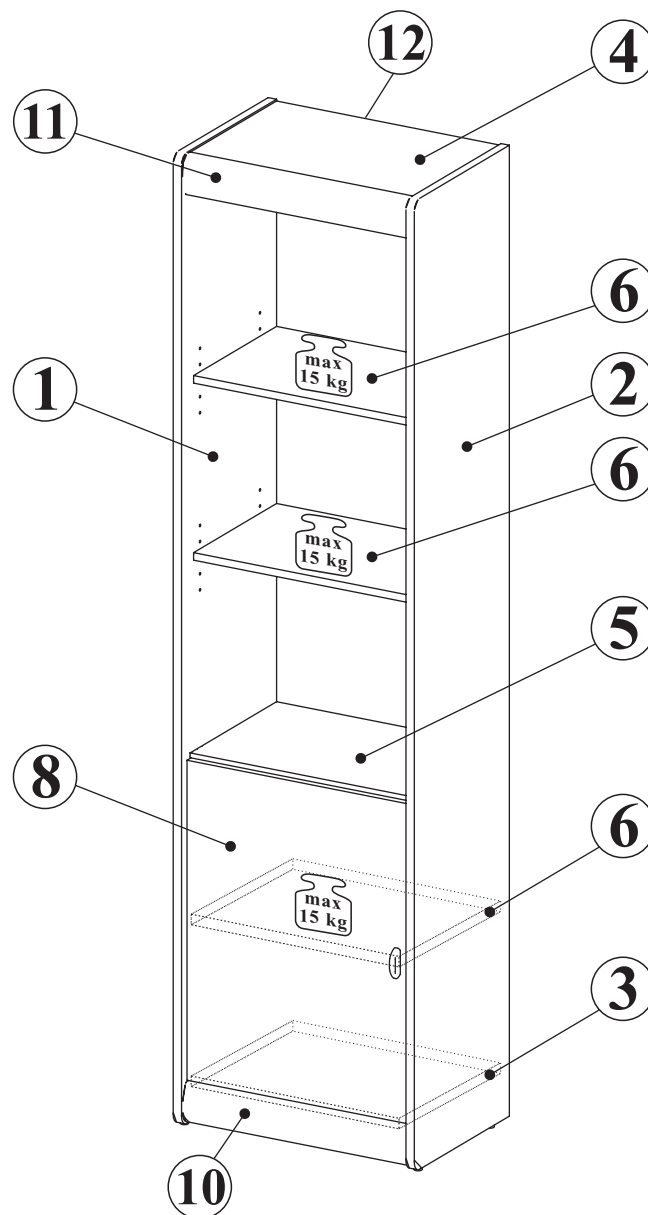
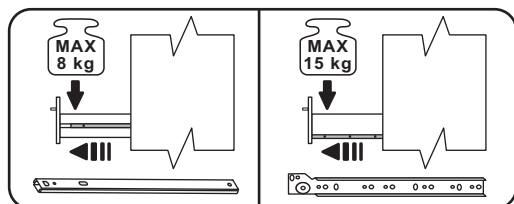
**MONTOWAĆ
 NA ROZŁOŻONYM KARTONIE!**



**Wskazówka dotycząca
 pielęgnacji!**

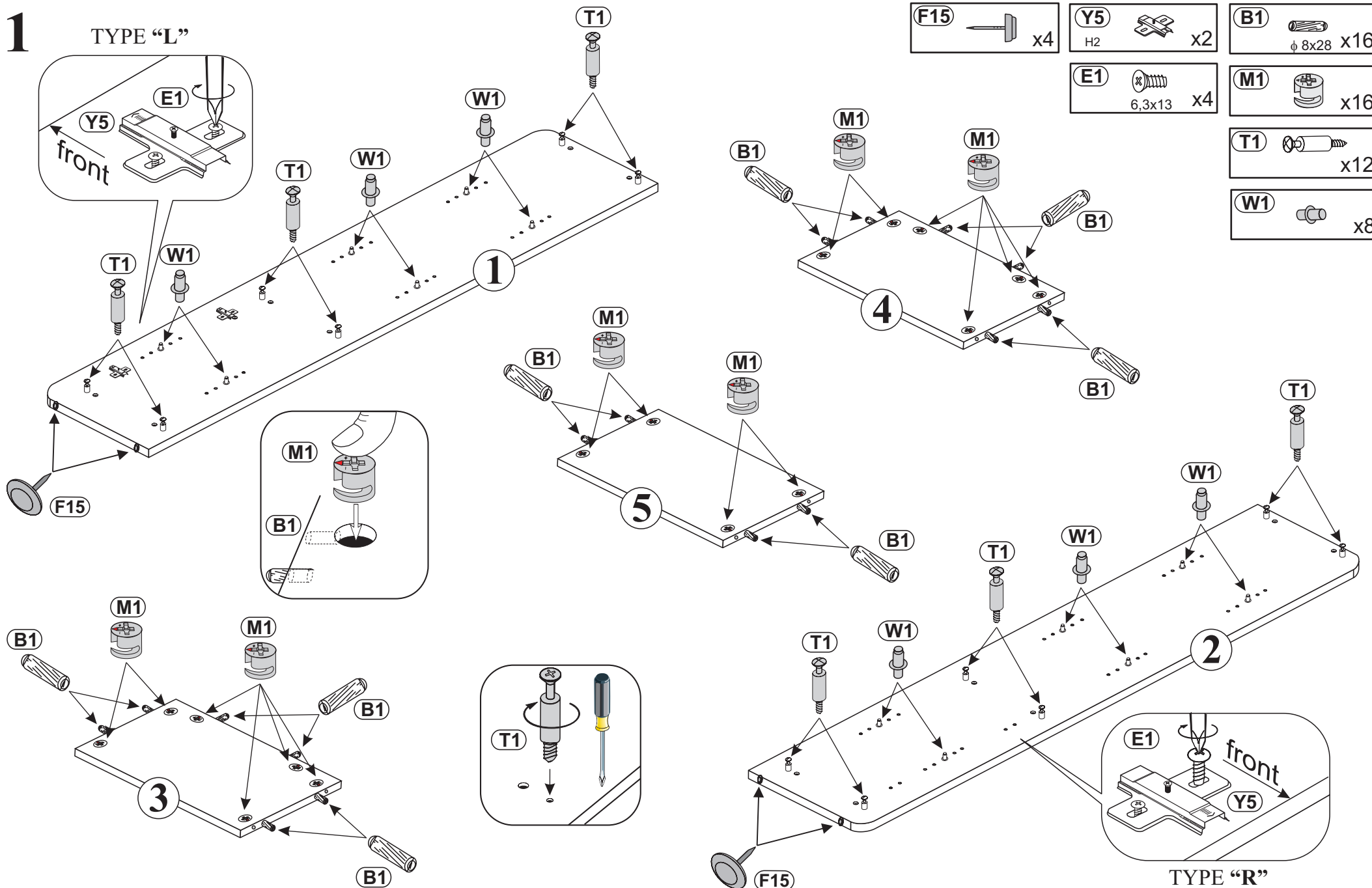
Proszę czyścić tylko suchą
 lub lekko wilgotną szmatką do kurzu.
 Nie używać żadnych środków szorstkich!
 Maksymalne obciążenie półek w kg:

Stärke/Gr.	Spanplatte/Płyta		
Länge/Dł. mm	15	18	22
0<400			
401<600	40	40	40
601<800	24		
801<1000	15	30	

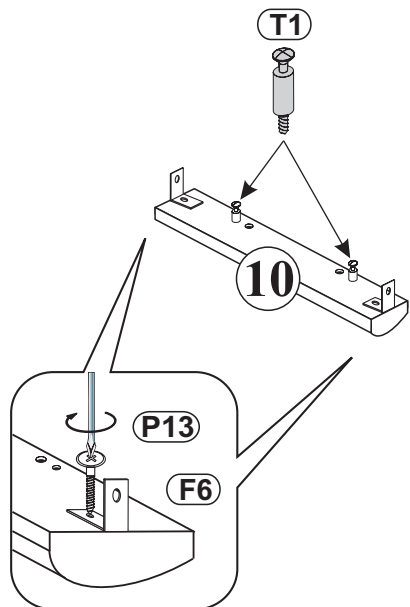
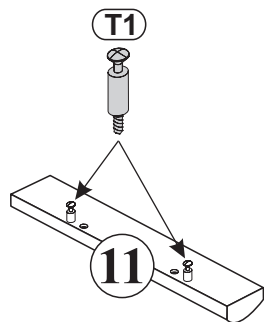
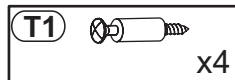
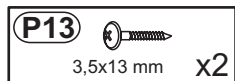


1

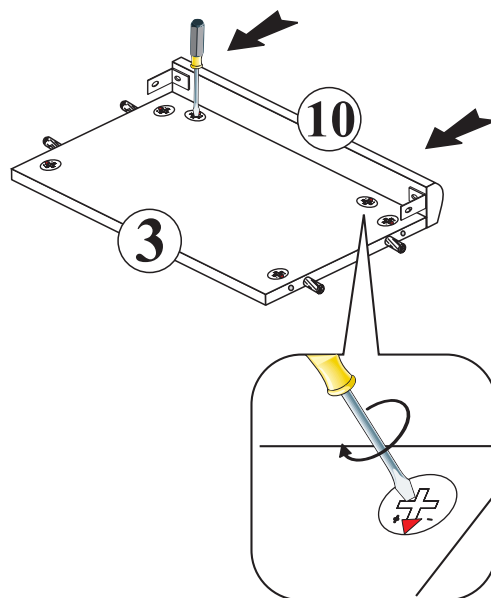
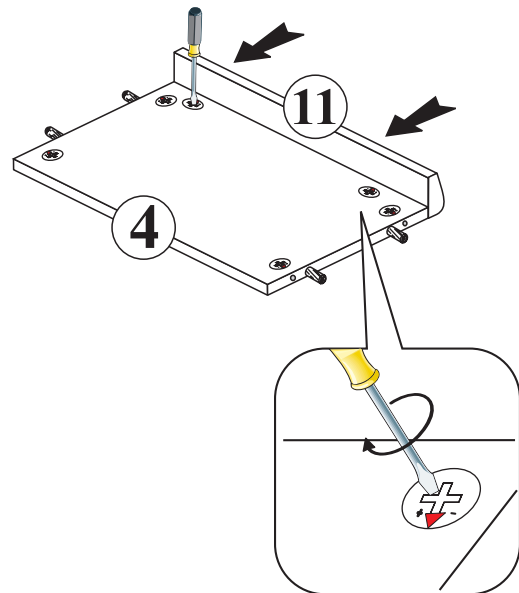
TYPE "L"



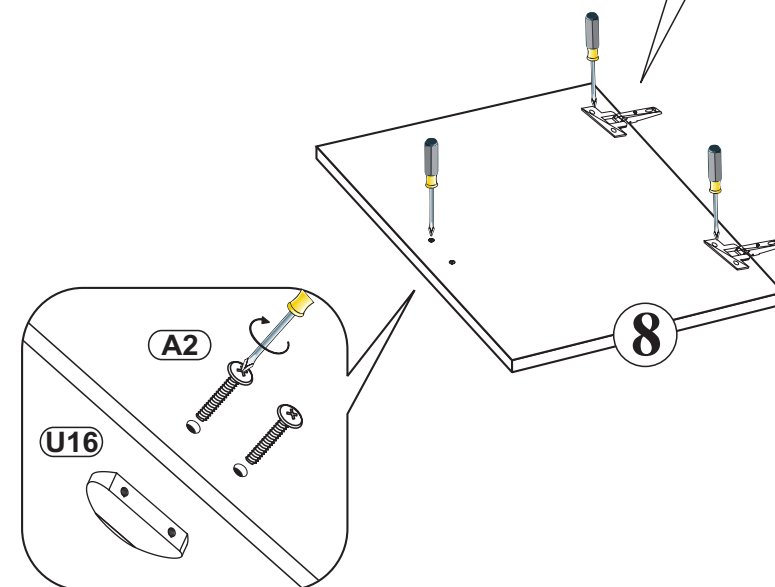
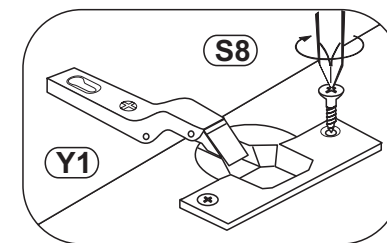
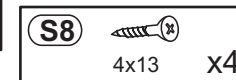
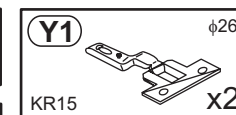
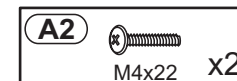
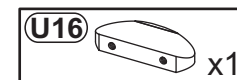
2



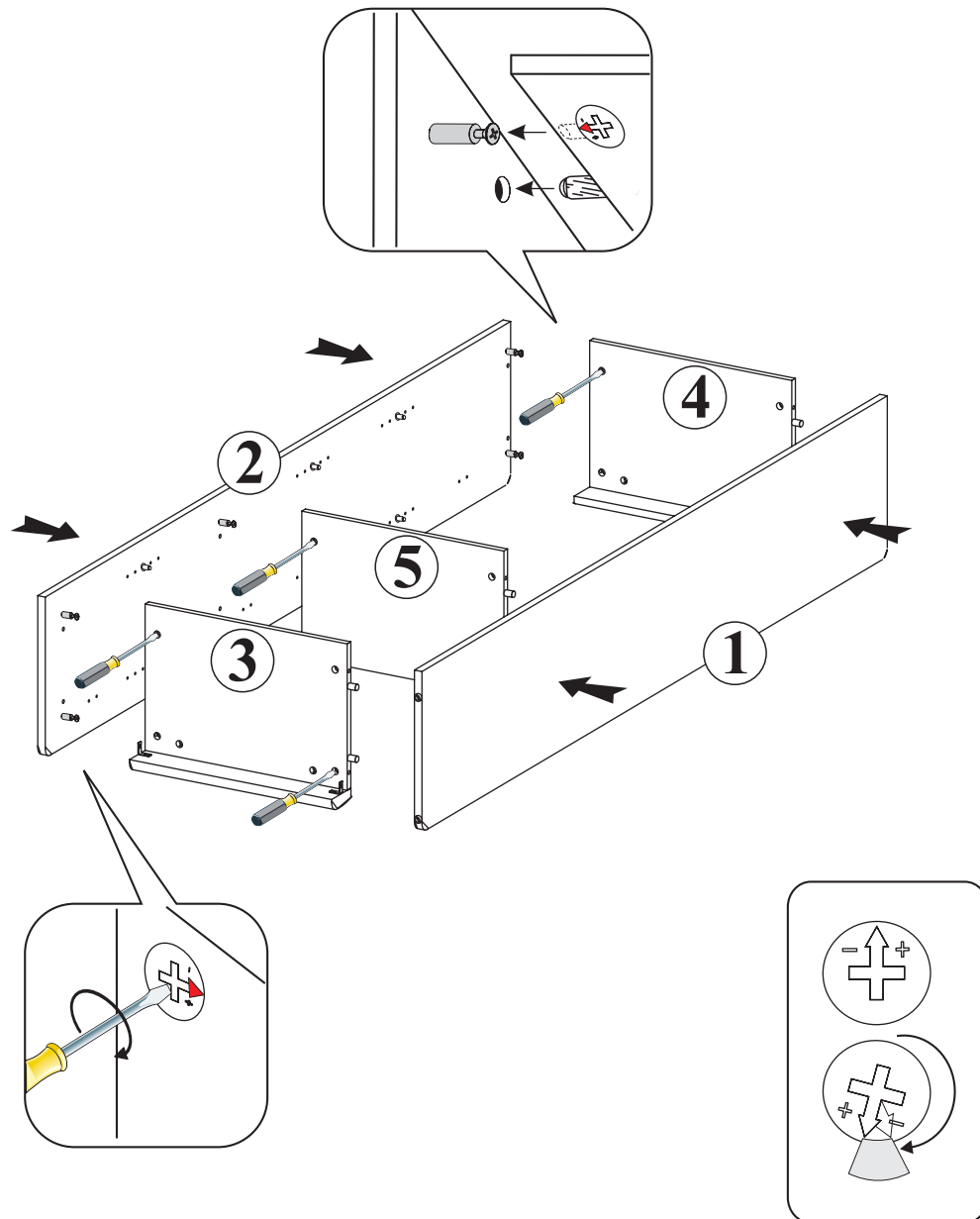
3



4

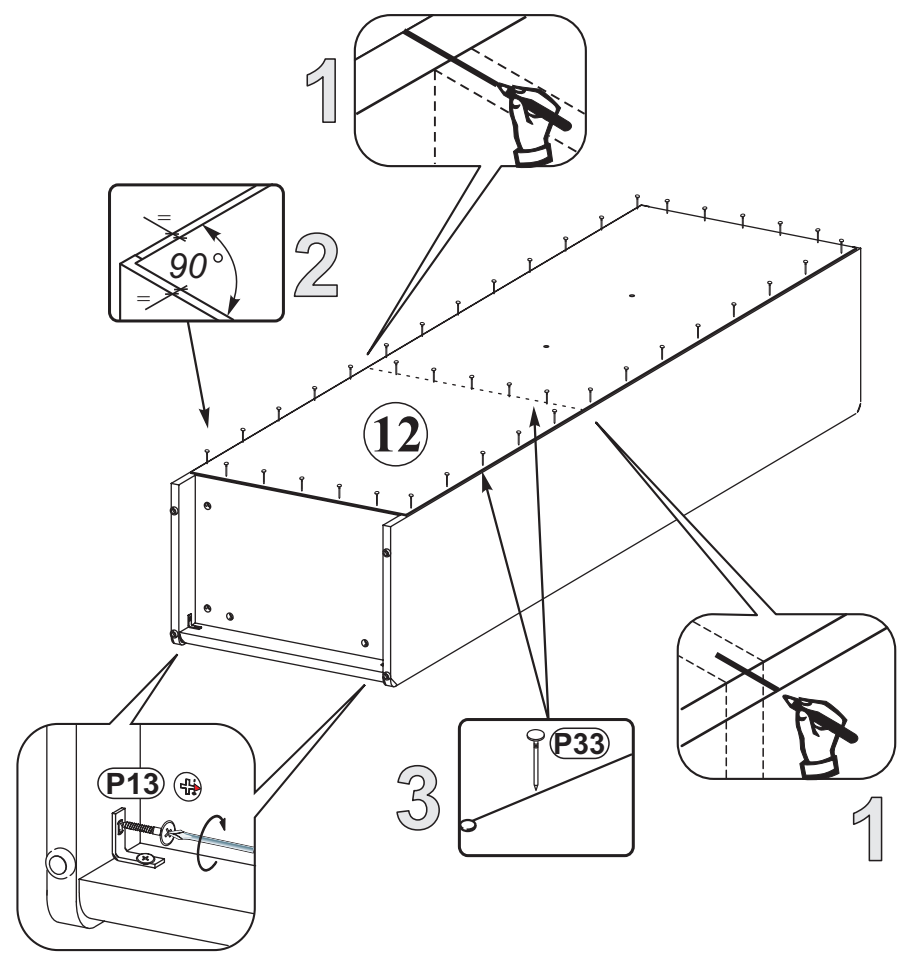


5



6

- P13** 3,5x13 mm x2
- P33** x47



7

